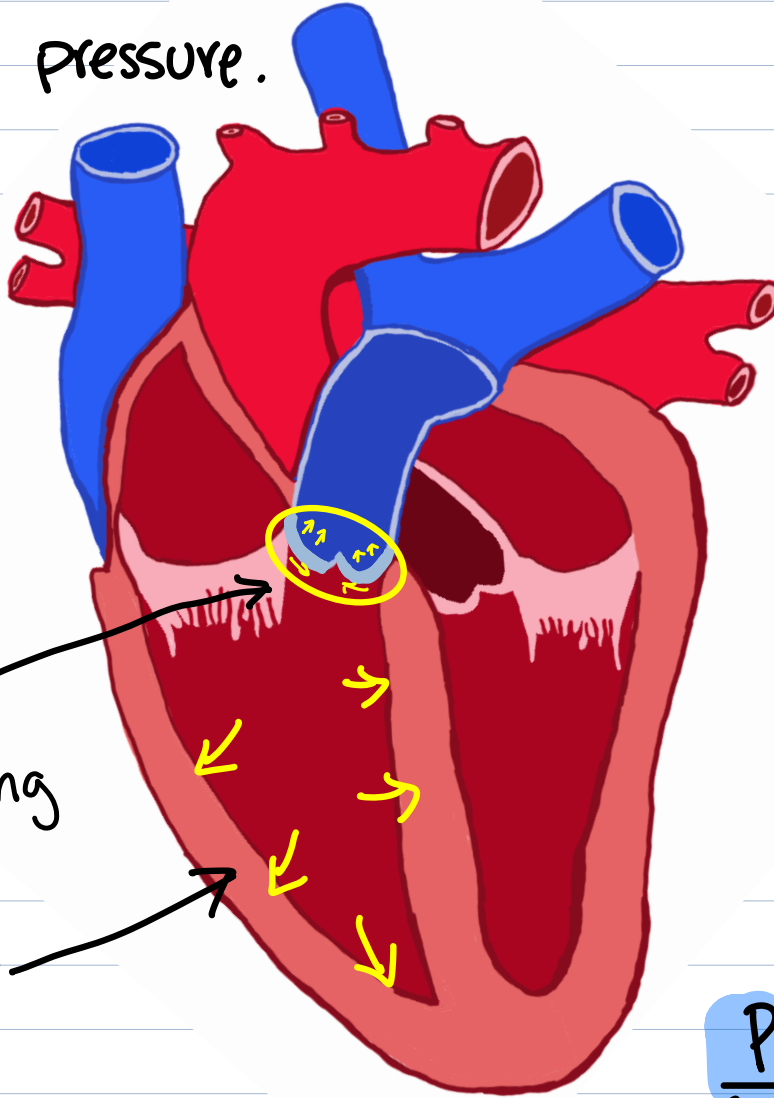


Pulmonary Stenosis

- Obstructive defect

Thickened or fused pulmonary valve causing
↑ pulmonary pressure.



Narrow
valvular opening

Right ventricle
enlargement

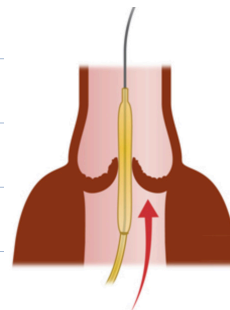
Complications: Pulmonary atresia
(No blood flow to lungs)

Signs & Symptoms

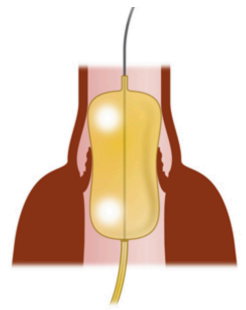
- HF
- Cyanotic
- loud systolic ejection murmur

Procedures

- Balloon dilation
- Stent placement



Balloon positioned in valve
using a guide wire



Balloon inflated to open valve